

SUPPLY CAPS



APPLY CAPS



armin caps

Manufacturer of plastic closures
Since 1995



SHAPE CAPS



MAKE CAPS

THINK CAPS



armin caps

Bojeneh 2nd Office Building, No.4/1,
Corner of 23rd St., Baharan St., Arjantin Sq.,
Tehran-1513934311, IRAN
Tel:(+9821) 88724001-2 Fax:(+9821) 88712836
Email: info@armincaps.com

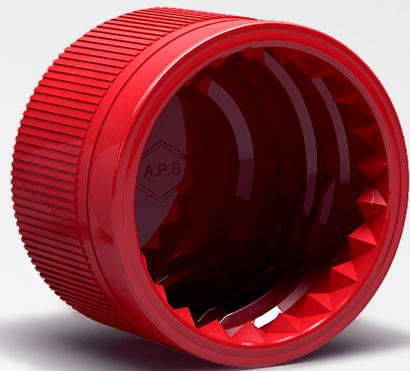


www.armincaps.com

www.armincaps.com

Get in touch with us or order online now

www.armincaps.com

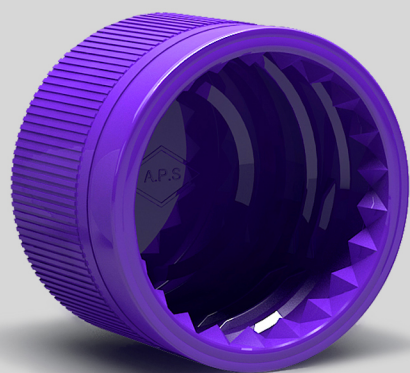


armin caps

Tel:(+9821) 88724001-2 Fax:(+9821) 88712836

Email: info@armincaps.com

Bojeneh 2nd Office Building, No.4/1,
Corner of 23rd St., Baharan St., Arjantin Sq.,
Tehran-1513934311, IRAN



Armin Plastic factory
Qazvin, Iran



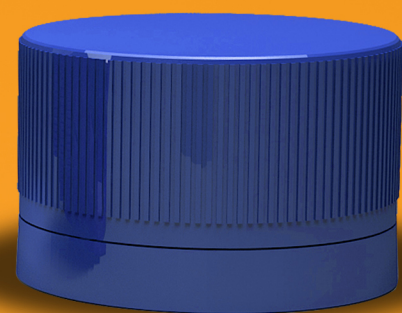
About us

Armin Caps also known as Armin Plastic Sabz (APS), was established in 1995 as the first and biggest producer of CSD liner plastic closures in Iran. This company is currently known as a pioneer company leading the Iranian market, within its industry.

Creditability and highest market share has been established with its extensive experience inside the industry making it a leading company in the Middle East. In addition to quality closures Armin Caps provides unparalleled customer and technical services.

Major categories served include carbonated soft drinks, bottled water, juices, isotonic sport drinks, teas, malt beverages, dairy, pesticides, liquid oils and automotive fluids etc.

Armin Caps has obtained a series of rewards and standards within its industry such as, holding the first license of production from the Health Ministry in Iran. Obtaining the first evaluation and acceptance for standards from both the Coca Cola Company and PepsiCo International for its closure grade, design and production, granting it a superior market position.



Iran's First Producer of CSD Liner Closures

HOW WE WORK

armin caps Ordering Process



QUANTITY ?

The quantity for you order needs to be identified. If the quantity for any reason is not known, we can help determine your requirement by your production level and storage space.



COLOR ?

The color of choice for your closure might either be pre-determined or if not we can help you choose the right tailored color in accordance to your packaging.



PRINT ?

If you are looking for a custom print on you closure, we can establish a close connection with our design team to deliver you the most optimal and relevant design for your brand or label.



INNER PRINT ?

We provide under-the-cap promotion capabilities for our customers looking for an effective and exciting way to advertise their product or encourage purchase for prizes.



QUOTE

Once the above steps are clarified a highly competitive and appropriate quote is tailored for your specifications mentioned to be agreed upon.



DELIVERY

The expected delivery time for your determined location is then specified, to ensure collaboration.



QUANTITY ?



COLOR ?



PRINT ?



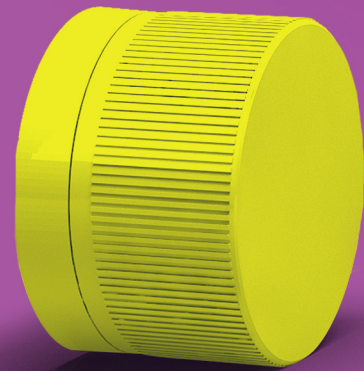
INNER
PRINT ?



QUOTE



DELIVERY



Over 10 Billion Caps Exported Worldwide



Standards



CSQ ISO 9001:2008 Certified



IQM UNI10854:1999 Certified



Eurostar Packaging Award



IFEC Oscar de l'emballage 2000



Quality Management
Systems Achieved



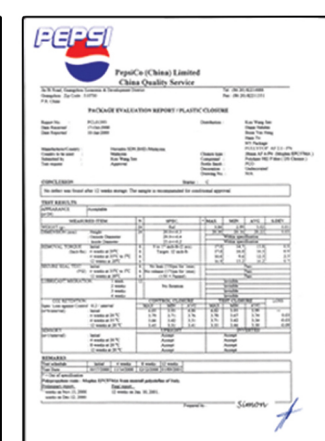
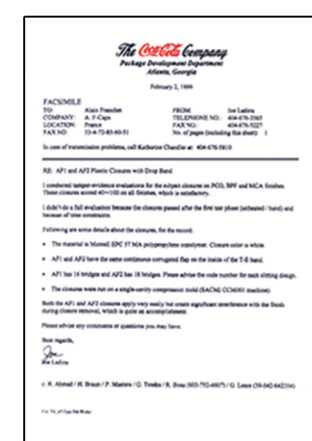
QMS IQNET



FullyTop Quality Certified



IRI Certificate of
producers rights

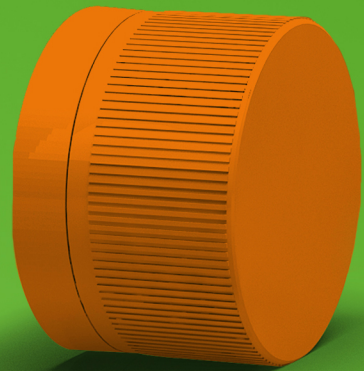


Evaluated and Accepted by

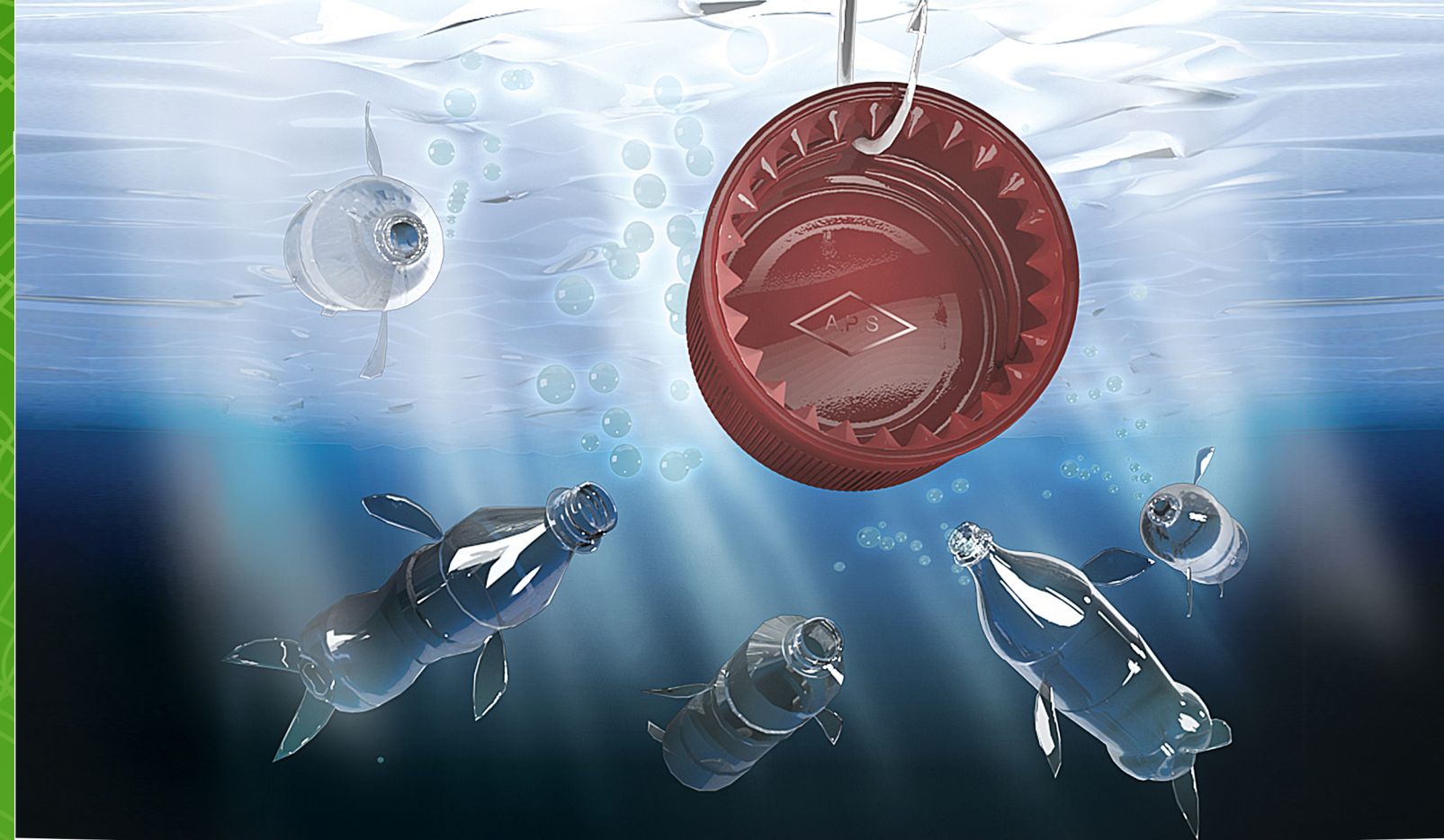
Coca-Cola
International

&

PEPSICO
International



Iran's Biggest Producer of Closures



VALUE PROPOSITIONS

By using Armin Caps closures and our expertise we aim to:

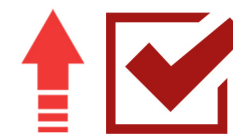
- ✓ Maximise your Profitability.
- ✓ Enhance the marketability of your brand.
- ✓ Optimise your total cost of your production.



Our 5 Key Goals



Quality



Reliability



Speed



Relations



Waste



Over 30 Billion Caps Produced

WHAT WE DO



THINK CAPS :

To obtain the most efficient solution means to start with the right concept and mind set. With Armin Caps we aim to support our customers from the very beginning of product development, support you with the cap design that will match with your bottles as well as reducing your raw material costs. We aim to support our customers down to the highest detail.



SHAPE CAPS :

A good cap must be efficiently produced, easy to fit and easy to handle upon opening without lack in quality and appearance. Using the most advance and up to date technology we aim to maintain our image, with extremely tight tolerances which mean the highest quality production. Innovative cooling procedures helps efficiency and solidity of our products to keep our customers confident even in the summer.



MAKE CAPS :

Expect a reliable cap supply at the lowest cost with Armin Caps. In our manufacturing site we produce closures every day around the clock, high precision cameras integrated within the production line conveyor belt to inspect every single cap produced before the packaging phase. High processing precision guarantees a minimum of rejects without additional costs. When it comes to production we have it all covered.



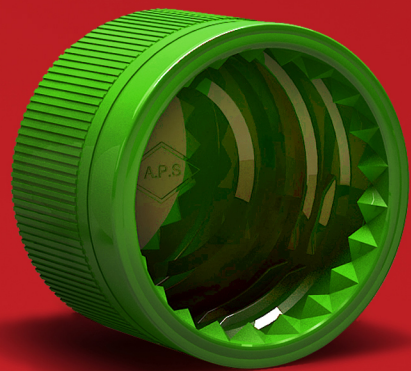
APPLY CAPS :

We don't stop when it comes to closure production, we ensure that our customer receives the most forward and direct information in regards to applying our closures on to your PET bottles. By providing up to date information on the latest technology for cap placement and securing, we aim to be customer-oriented with our passion to deal with your demands. We also understand that every customer is an individual, when it comes to service and needs.

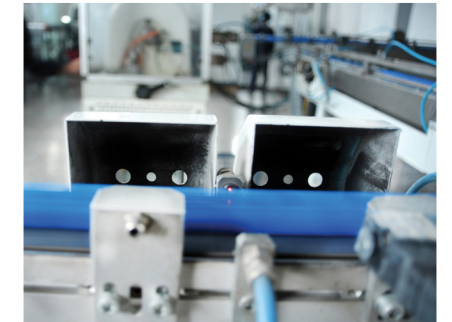
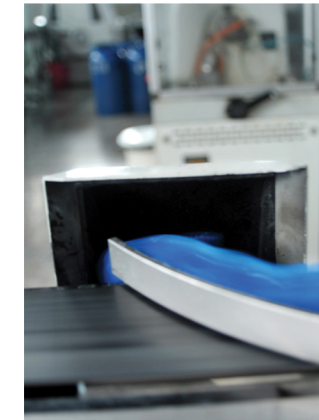
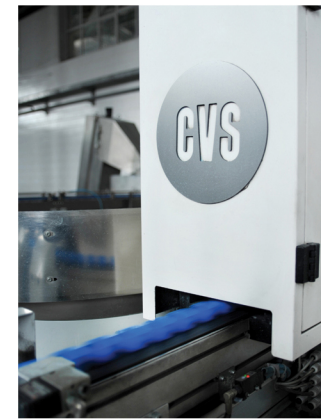


SUPPLY CAPS :

Our team is trained and determined to establish a long-term relationship with our customers. To ensure future business and keep our customers satisfied each member of our sales team is delegated a particular number of customers, so that when we reach you, or you reach us, you will hear a familiar voice.



With Over 20 Years of Experience



QUALITY MEASUREMENTS

Armin Caps prides itself on providing its customers with the highest quality product all year round. Despite production at 24 hours a day 7 times a week with the highest levels of efficiency, Armin Caps has integrated several inspection levels which our closures must pass through to be packed up and ready to deliver ensuring customer satisfaction.

After the primary stage of production in which the PE or PP material has been injected and molded, with an ultra-speed camera every single closure is pictured in real time through an inferred lens to inspect the required dimensions and informalities it might have to be separated from the line.

After the first filter process the caps are dispensed and followed through sorting technology which levels the temperature of the closures sanitizing the production line.

The third filter of the production is another integrated inferred camera which inspects informalities such as dimensions and closure color set for that specific production, if the cap does not meet the requirements within the slitting process screening, again the cap is rejected off the production line. The closures are then passed through another sanitation stage of temperature and UV rays which clearly sanitizes the production.

Throughout the whole production process several highly experienced Quality Control personal carry out several routine procedures to test the material through further stages of evaluation to confirm the required levels are maintained, which over 20 years of experience helps tick those boxes.

